

CERTIFICATE OF LOCATION OF GOVERNMENT CORNER

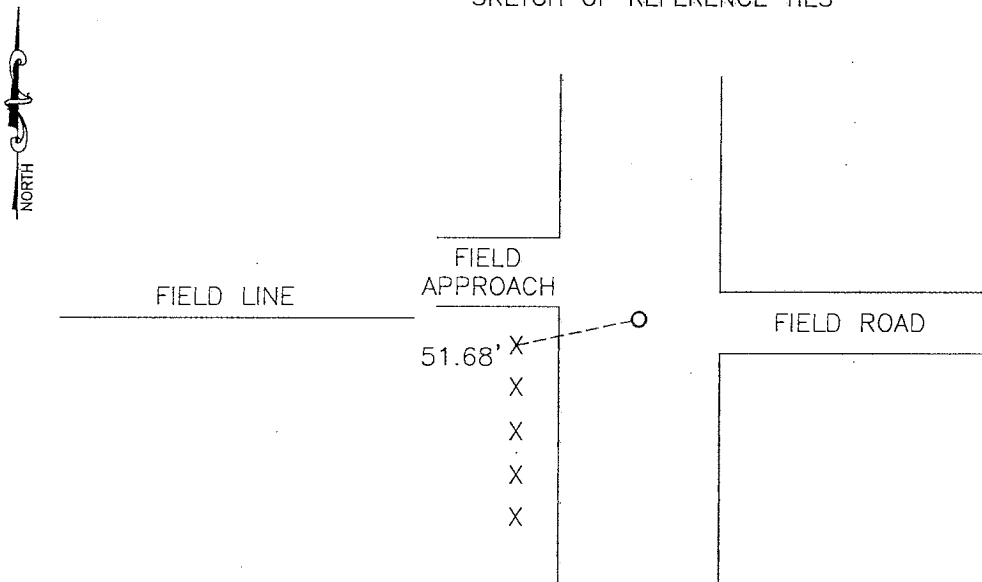
EAST QUARTER Corner of Section 11, Township 108, Range 42, 5TH P.M.

STATE OF MINNESOTA, County of MURRAY

At the corner location shown on the sketch:

- On _____ found a _____
DATE
- left monument as found, lowered monument, removed monument (explain)
- On 07-12-2010 placed a 1" PIPE WITH SEAL #43844
DATE

SKETCH OF REFERENCE TIES



Minnesota State Plane Coordinate
System Murray County Datum
NAD83 (1996)

N: 219051.345
E: 479831.442

Nail and survey marker in end fence post WSW 51.68'

Statement of evidence relative to this corner location is on back of page.

I hereby certify that this document and the data contained herein was prepared by me or under my direct supervision.

[Signature] 1/12/11
SIGNATURE DATE

Registration No. 43844

- Land Surveyor, Professional Engineer
- County Surveyor, County Engineer

OFFICE OF THE COUNTY RECORDER
County of _____

I hereby certify that this document was filed in the Co. Recorders office at _____ .M on the JAN 18 2011 day of _____ A.D. 20 _____

County Recorder [Signature]
By _____, Deputy

DOCUMENT NO. _____

Statement of Evidence

In 1861, L.G.W. Fletcher did the original subdivision of the township.

In October, 1915, J.R. Johnston, the County Surveyor, found a stone at the corner.

On the Murray County Highway Department plans, the corner is shown as a field stone.

On July 12, 2010, Bueltel-Moseng Land Surveying set a 1" pipe with seal #43844 in the center of the road and 2639 feet north of the northeast corner of Section 14-108-42, as called for on the Murray County Highway Department plans. Did not dig at the request of the Murray County Highway Department because there is a tile in the center of the road.